

Young Children's Team – Public Health

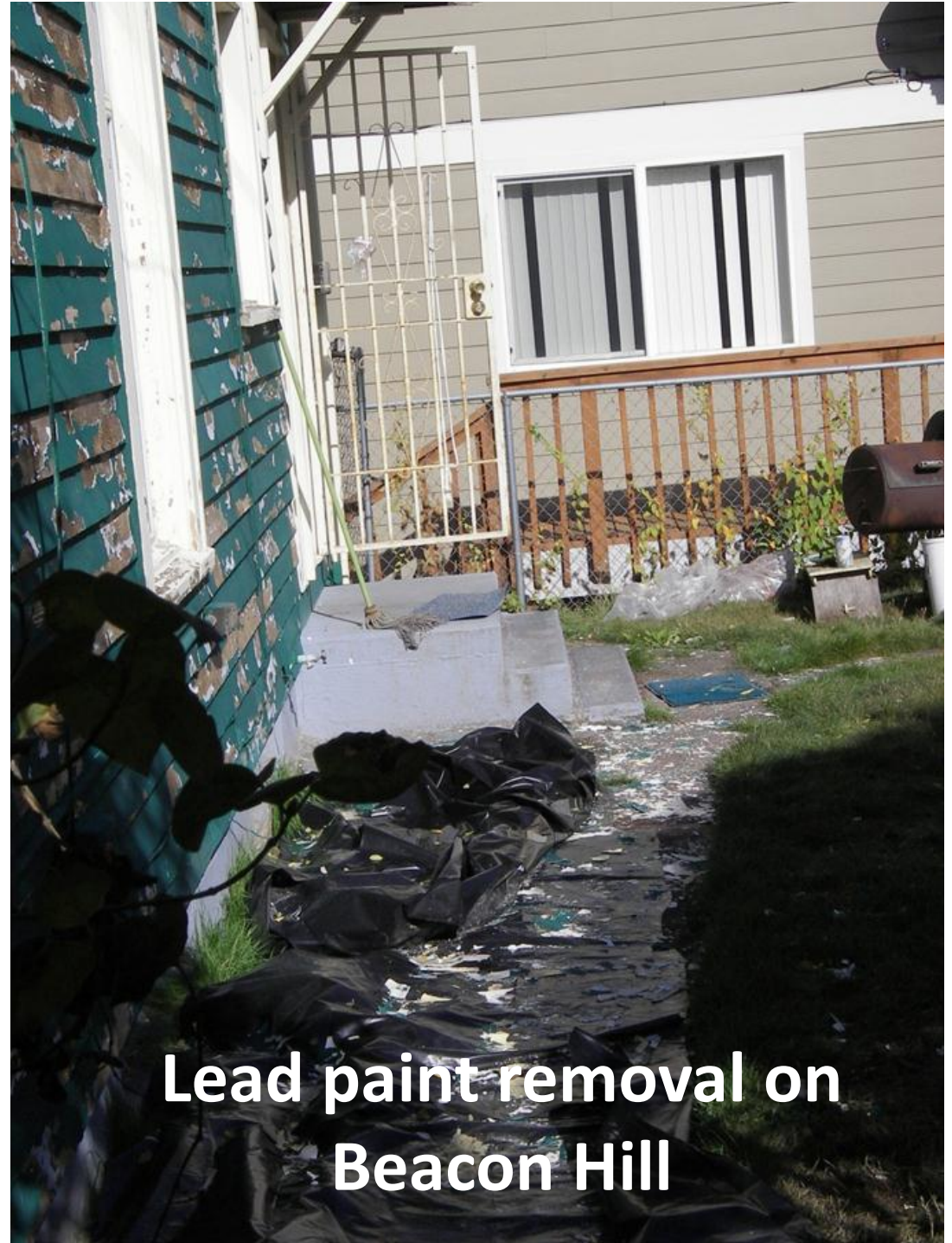


Exposure Prevention

Hazardous Waste Management

Mismanagement of a hazardous waste leads to an exposure risk

LHWMP coordinates with multiple compliance agencies



Lead paint removal on Beacon Hill

Exposure Prevention - Target Audience



The major source of lead exposure among U.S. children is lead-based paint and lead-contaminated dust; which should be professionally removed.



Highly Vulnerable:
Children with high blood lead

Highly Motivated: Parents of sick children

Exposure Prevention - Case Work

- Health care providers (HCP) test children for lead; DOH reports to LHWMP
- Staff works with family to identify exposure source and pathways
- Family and HCP receive an “Action Plan” to reduce exposures.



Lead Paint



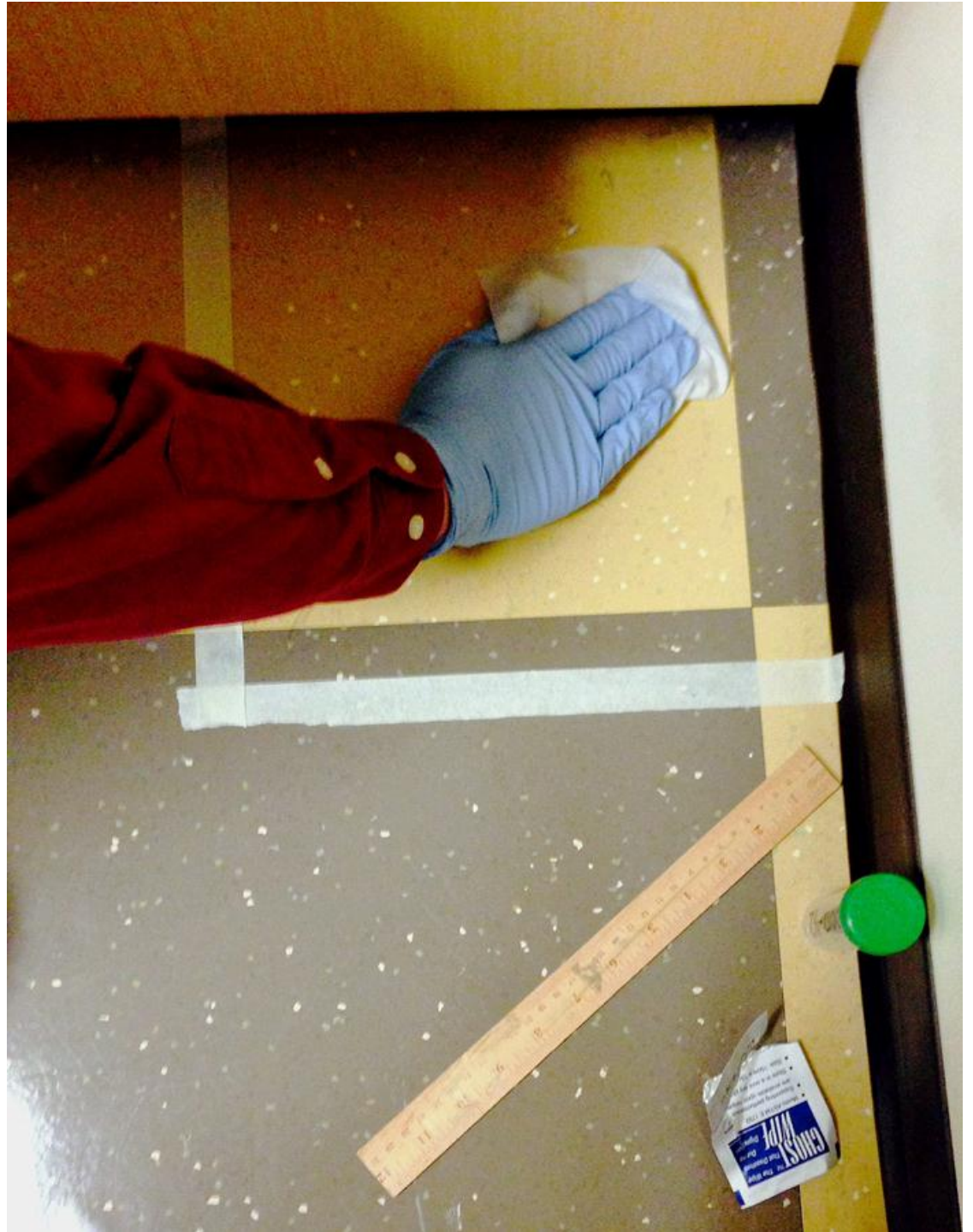
Do Not Forget the Children—
Some Day They May Be Customers

Lead Paint = $\geq .5\%$

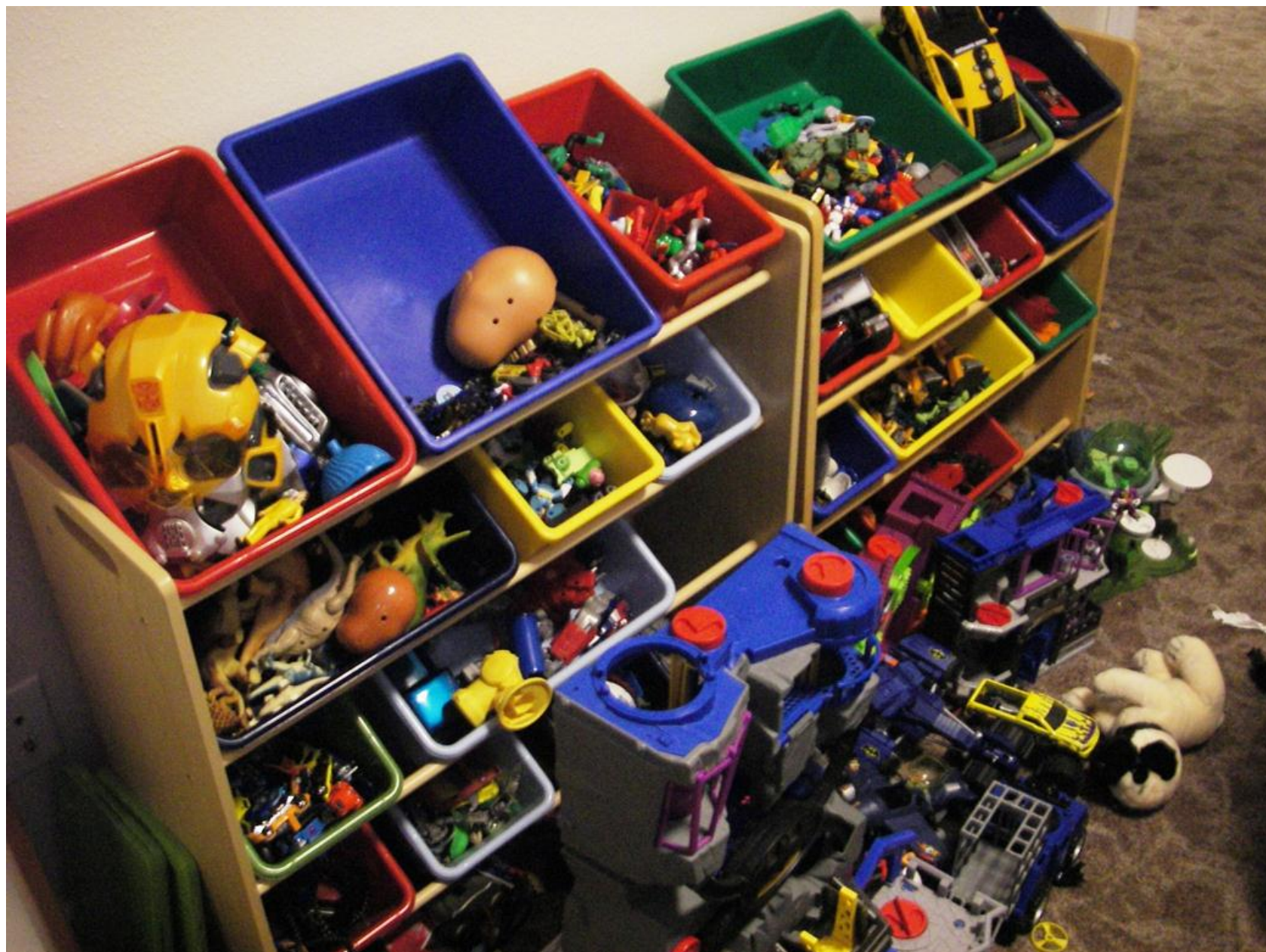
Pre 1978



Lead Paint, Inside



Toys



Keys & Jewelry



35,747 ppm 3.7% Pb



29,000 ppm
2.9% Pb

Spices



1.10
ppm →

0.22 ppm



More cultural exposures

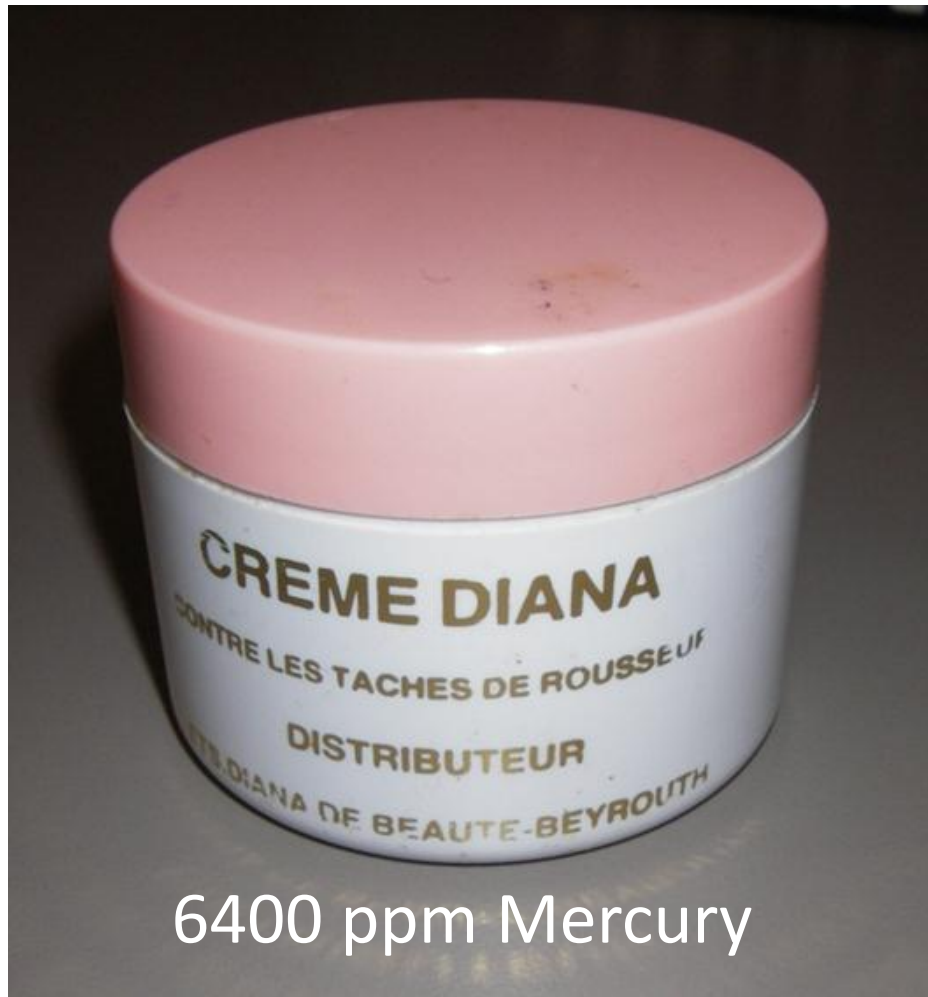


“Bamboo” Candy
9.5 ppm



Cosmetic Rock – 100,000.0 ppm

Exposure Prevention multiple chemical issues



Volunteer Training Network (VTN)

Opening Doors into Communities

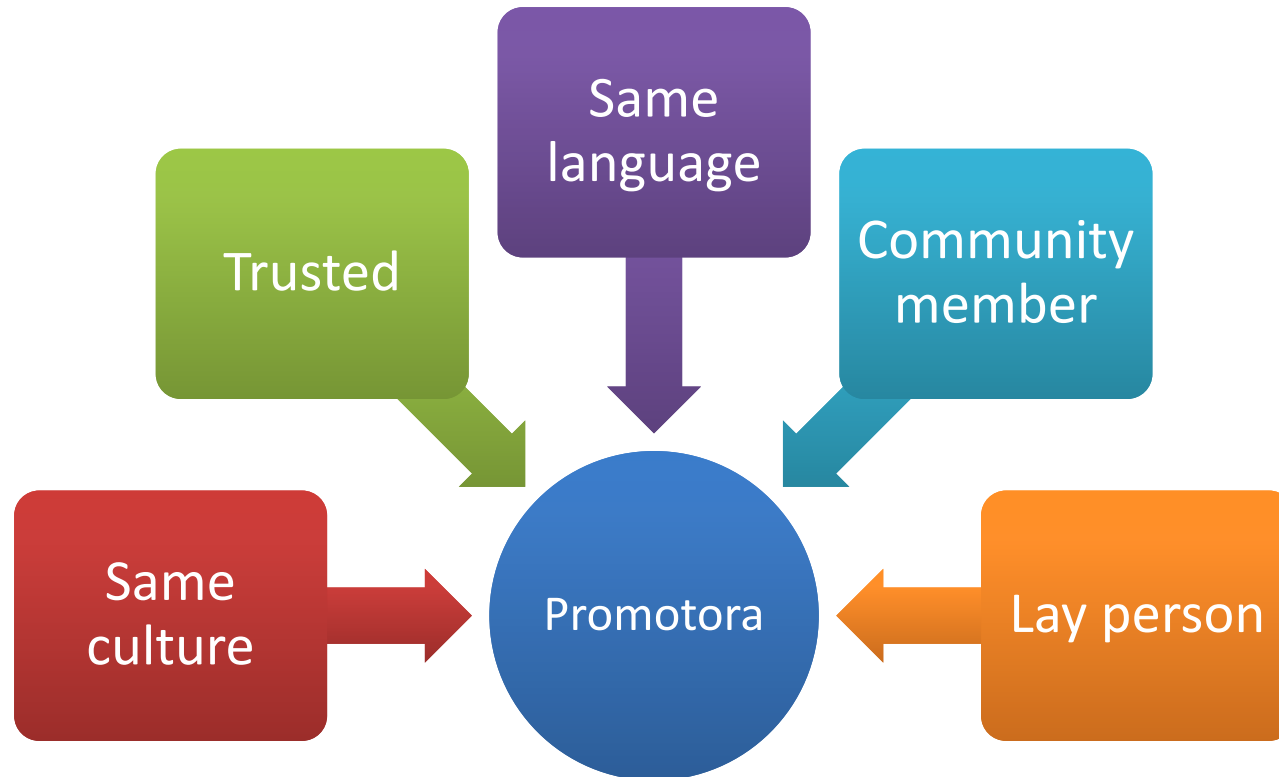
Produced by:

Public Health 
Seattle & King County

As part of the Local Hazardous Waste
Management Program in King County



Promotora Attributes



Promotora is a Public Health community engagement model.
Developed for outreach into Hispanic communities.
Promotora means “one who promotes”

Promotora = Peer Trainers



ReWA

Refugee Women's Alliance



LHWMP & ReWA Chinese Promotoras
(2012)

Outreach



Education

Train & Support the Trainer

Train



Local Hazardous Waste Management Program
in King County, Washington

“LHWMP College”

- Promotora Skills trainings
- LHWMP staff = “Professors”
- Develop adapt LHWMP curriculums
- Provide educational materials
- Program evaluation
- Certify “Graduate” volunteers (includes background checks)

Support

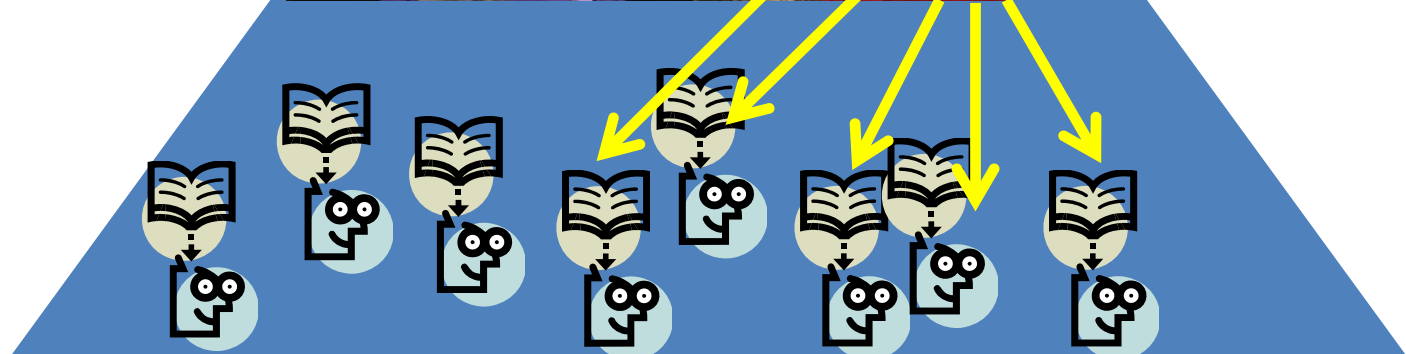


Field Logistics

- Recruit Promotoras
- Host “College” trainings
- Help volunteers organize their community
- Supply materials to Promotora
- Receive input on materials and curriculums
- Supply food at community trainings

Community Engagement

Participants shared what they learned with others in their community



Curriculum Development & Translations

Curriculum Topics

- Lead
- Bed Bugs
- Green Cleaning
- Art Hazards
- Air

Languages

- Chinese
- Vietnamese
- Burmese
- Bhutanese
- Somali
- Spanish

Teaching Kits

Key Questions for Lead



Lead: What You Need to Know



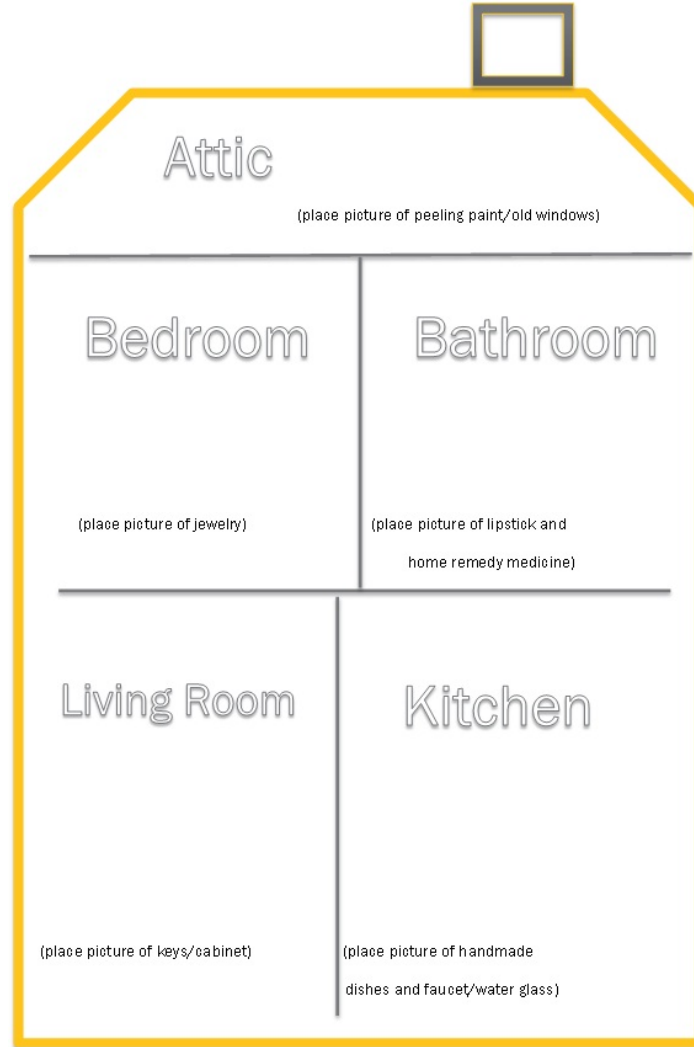
Where it is found?



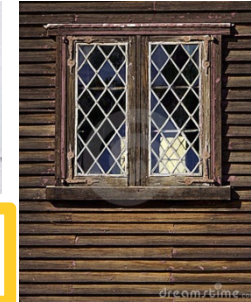
Drinking water from solder in pipes



Car and house keys



Peeling paint and windows



Handmade dishes

Garage/
Yard

(place picture of ammunition and fishing weights)

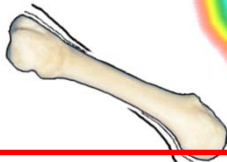
How lead effects you and your children



Learning Problems



Attention deficit & lack of focus



Smaller body size & smaller growth



Hearing Problems



Trouble with problem solving, reasoning, resolving conflict, and lower I.Q.

What to do and where to go for more?

What you can do:

1. Get Testing

Ask your doctor for a blood lead test.



2. Safer Cleaning



Wet wash & damp dust.



Use a HEPA vacuum.

3. Healthier Diet



Eat foods rich in calcium, iron, and vitamin C.

Provided by:
Public Health
 Seattle & King County

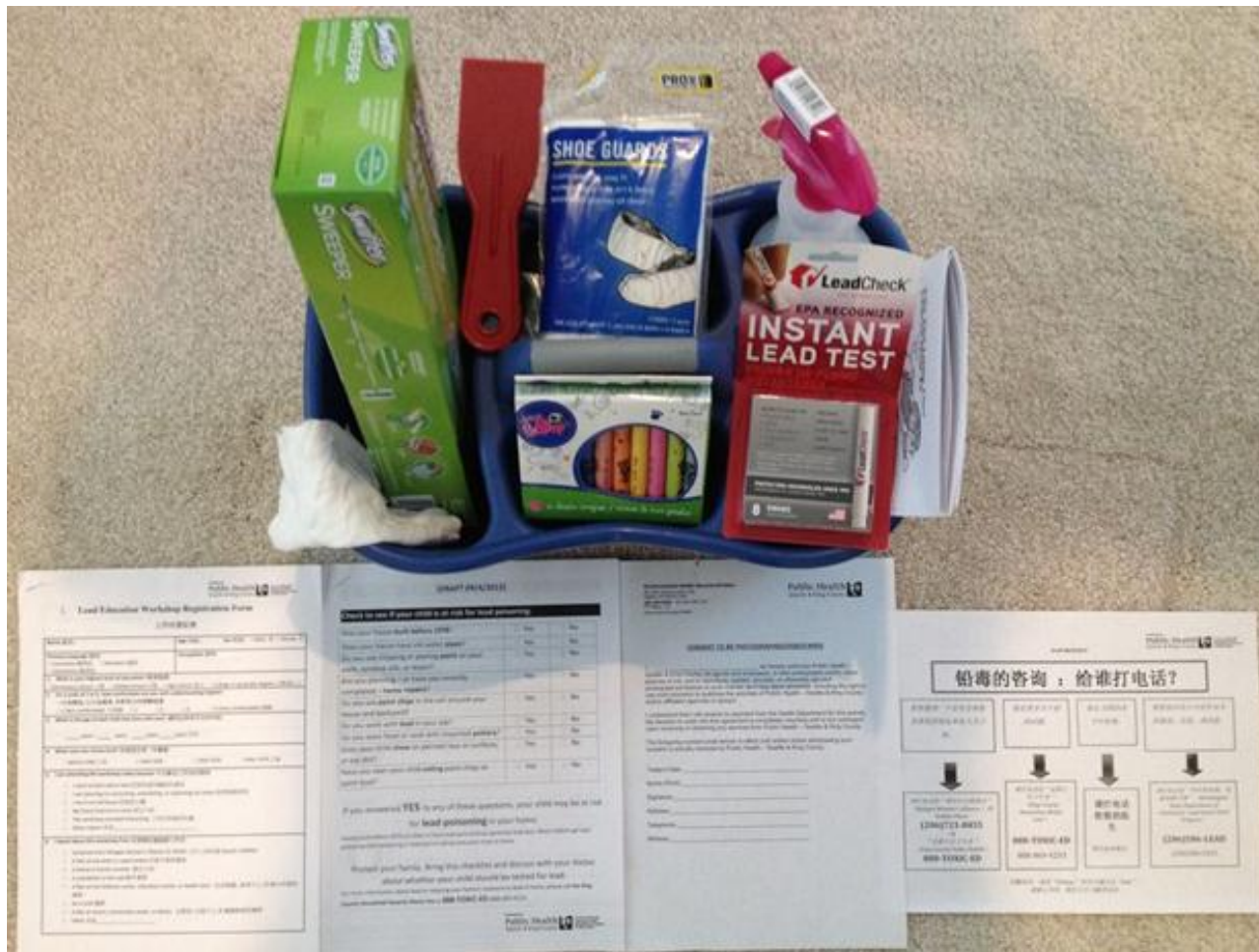


Lead Resources: Who do I call?



Interpreters are available. Say that you speak "Chinese" and you are interested in "lead."
 Please be patient while we connect you with a Chinese interpreter.

Action Kits & Evaluation





Healthier and Toxic Free Homes Project

A COMMUNITY DIRECTED
PARTNERSHIP



Public Health
Seattle & King County



The Guiding Principles

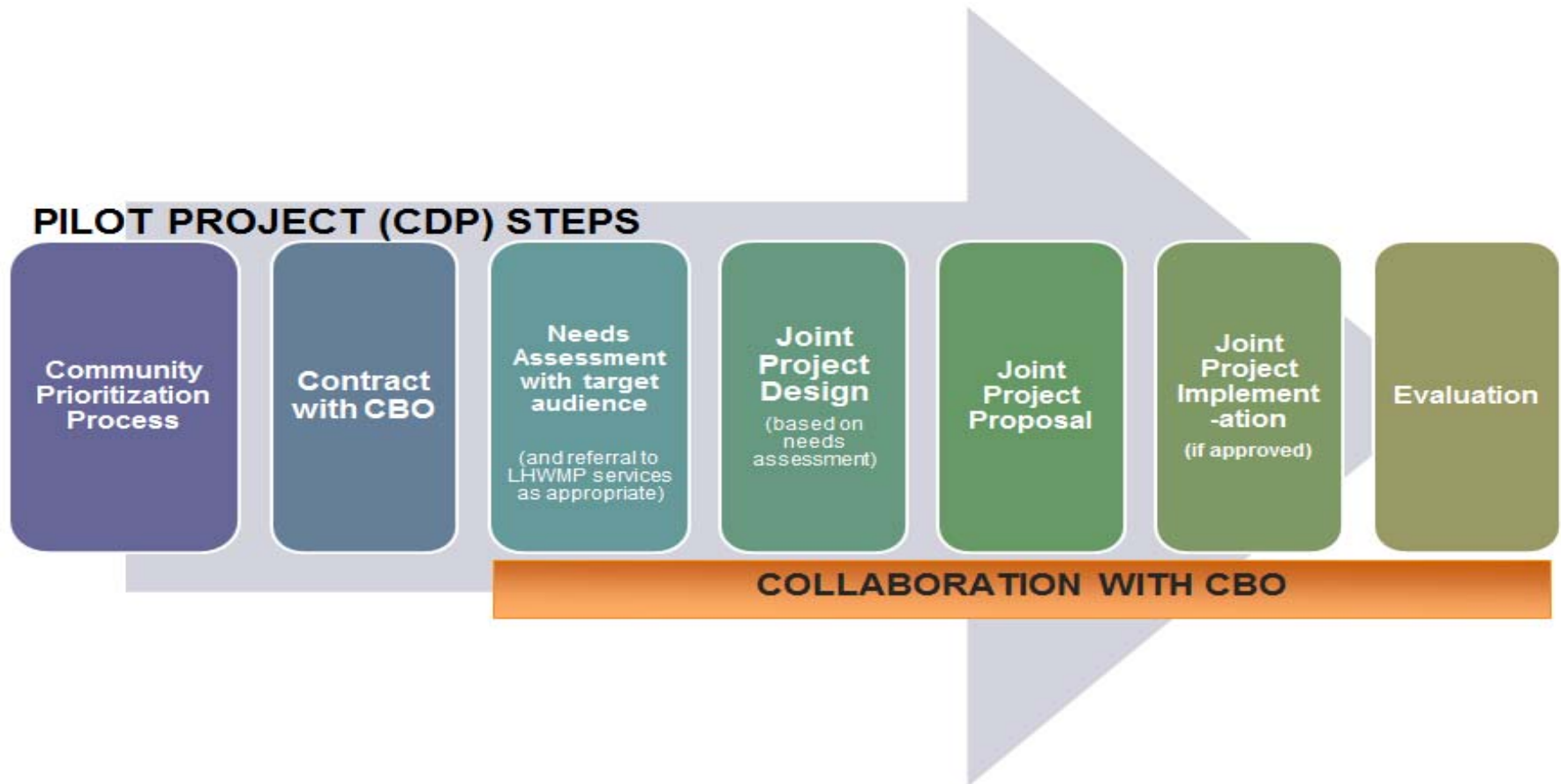
SERVICE EQUITY—FAIR AND JUST

- Any child and family in King County should have access to the knowledge to reduce exposure to toxic substances in their home, regardless of race, income level, and English language proficiency.
- People should have a say in what services they receive and how they receive it.

The Goal

Work with the community as early in the project as possible and **work collaboratively on designing and implementing the project**—in other words, a TRUE PARTNERSHIP.

The Steps



Engages residents in the **planning, development, and implementation** of healthy housing activities to reduce chemical exposures in their communities.

Where are we in the process?

- Gathering input for a future service project in 2014 from the 5 communities in South King County.



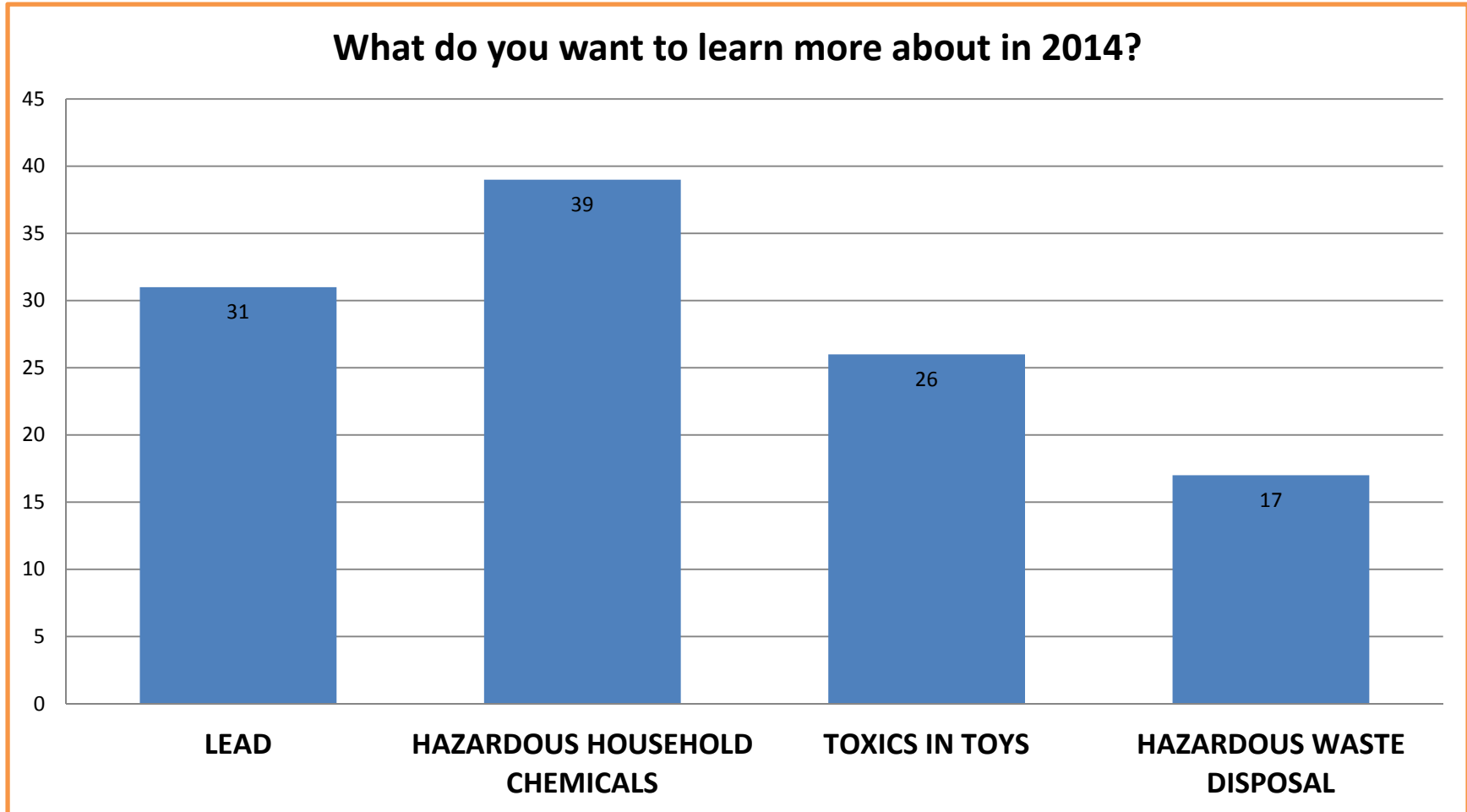
The Communities

South King County residents

- Spanish-speakers
- Purepecha (indigenous group from Mexico)
- Chinese
- Filipino
- Bhutanese



The Topics



Some Initial Findings

- **Some awareness about toxics...**

“Paint in old houses have lead in them”

- **But also some misconceptions...**

“In some cookware like pans and casseroles that we use. If it burns up, the lead gets into the food that we are cooking so as much as possible, never use those non-stick pans.”

Varying levels of awareness

“ I have been living in the US for a very short amount of time, have limited English and do not know how to choose which [household chemicals] to buy.”

Translated from Mandarin

“It is better to use vinegar, citrus and baking soda [to clean] because they don't cause any side effects.”

Translated from Tagalog

Next Step

- Working with the communities to design a service project ...

STAY TUNED!

Lauren Brinker (206) 263-8433
lauren.brinker@kingcounty.gov

Tracee Mayfield (206) 263-8538
tracee.mayfield@kingcounty.gov

Will Perry (206) 263-8477
william.perry@kingcounty.gov

Sammi Truong (206) 263-8814
sammi.truong@kingcounty.gov

